

Volume 34, No. 2, August, 2007

Editor/Pub.: Dr. Susan DuPree

### OUR MISSION

Is to promote Rotary fellowship by encouraging clubs to sing,  
 to organize musical activities for performance at all levels of Rotary functions,  
 and to support community musical organization and school music programs.

IFRM Shares ..... 1  
 Prelude ..... 2  
 Contributing to Music Notes..... 2  
 Linkages ..... 2  
 Rocky Mountain Rendezvous ..... 3  
 Formation of IFRM Foundation..... 4  
 World Choir Opportunity..... 4  
 New Membership Director..... 4  
 The European Connection ..... 5  
 When You Wish Upon a Star..... 5  
 Children Invited to Compete ..... 5  
 Keeping the Beat ..... 6  
 Footnotes..... 6  
 Look Who’s New!..... 7  
 Membership Application/Renewal Form ..... 9  
 “I Play/You Sing” CD’s..... 9  
 Songs for the Rotary Club..... 9  
**IMPORTANT NOTICE TO MEMBERS**..... 9  
 IFRM Directory ..... 10

### IFRM Shares



**Chungsam Doh, Lee Denlinger,  
 RI President Wilkerson, Susan DuPree,  
 Joyce Fritz, & Bill Reinhardt**

We shared our joyous love of music with a mighty appreciative group of fellow Rotarians in Salt Lake this June. Thank you, **Joyce** and **Ada** for your lyrical flute harmonies; to **Lowell** for a string of plucky melodies; and to **Aubrey, Cesare** and **Locksley** for your vibrant singing and song leading... Thanks, **Andy**, for daring to conduct an ensemble game enough to pull off an early morning concert and to our talented pianists, who in all of 4 days, never let up on the piano, despite distractions like Ms. Utah and the bagpipe band: **Peggy, Steven, Ellen** and **Josie** and, of course, **Chungsam**, who is there whenever you need him! **Curtis**, you were masterful at rounding up the keyboards as well as working the booth with **Bill** and **Tinka**. Finally, all kudos to **Lee** for whom my job could not be fulfilled without your strong, sure hand and counsel. We are a team!

Serve in Harmony, *Susan*



**Chair Susan DuPree  
 & Treasurer Curtis Reinhardt**

## Prelude

François Daoust, Web Architect

Current members (paid to 2008) can now access the IFRM Directory online through the fellowship's website, [www.IFRM.org](http://www.IFRM.org). The interactive Directory allows you to update your profile, search members by name, club, district, or country, talents, and e-mail fellow members. Follow these steps:

- Go to [www.IFRM.org](http://www.IFRM.org)
- Click on **Log In** (left side panel)
- Click on **Forgot or need to get a Password?**
- Enter your **Email** and click the **Send** button

Check your email, and copy the password sent to you. IF YOU DON'T GET YOUR PASSWORD IN AN EMAIL, then perhaps the email address has changed? You will need to contact the [membership@IFRM.org](mailto:membership@IFRM.org)

- Return to the **Log-In** and type in the password that you received.

As soon as you login, you will be directed to your profile. You may update any information, including changing your password.

Click on **Directory**

- Type in your District number to see other IFRM members in your District
- Type in the name of your country to access IFRM members (please use USA for America and West Indies for Caribbean islands)
- Type in **flute** under **talents** and see what comes up!

More members only benefits to come And more pictures of the Salt Lake City Convention are online in the **Photo Gallery**.

## Contributing to Music Notes

Original material and photos (in jpg format) are welcome! Send material to [chair@ifrm.org](mailto:chair@ifrm.org). Note that original photos *cannot* be returned.

**Deadline for next Music Notes  
submissions: 2/1/08**

## Linkages



**Lee Denlinger, Secretary**

How many Rotarians can say that they met hundreds of musicians, promoters, music enthusiasts of all ages... within a four-day period? AND, enjoyed the creative blues played by IFRM member **Steve Wiggins**, the flute accompaniments of IFRM Director **Ada Kahn** and fellow IFRM member, **Joyce Fritz**, with vocalists who just "dropped by" to sing under the able direction of IFRM Directors **Andy Anderson** and **Chungsam Doh**. Welcome to the IFRM booth at the RI Convention in Salt Lake City!

You cannot speak about **linkages**, without referring to the talented Rotarians who make up our music fellowship. The talent extends from hand bell ringers and conga drummers to vocalists and instrumentalists....all bringing their talent to Rotary activities around the world. They come to the IFRM booth to share their stories, to promote the songs they've composed and, perhaps, recorded on CDs, and to join in fellowship through music.

The synergy that results when Rotarians with a common purpose come together energizes our fellowship. IFRM's **on-line Directory** facilitates connecting with fellow IFRM members. After you log in, you can use the search feature to access other IFRM members in your country, district, or club...give it a try!

Our **IFRM-funded projects** in Manila, Philippines, Grenada, West Indies, and in New Orleans, Louisiana, USA could never have materialized without the support, creativity and commitment of us all....this is what IFRM is all about.

### Rocky Mountain Rendezvous



**Lee Denlinger, Lowell Yoder, Andy Anderson, Ada Kahn, Susan DuPree, RI Fellowships Chair Abraham Gordon, and friend...**



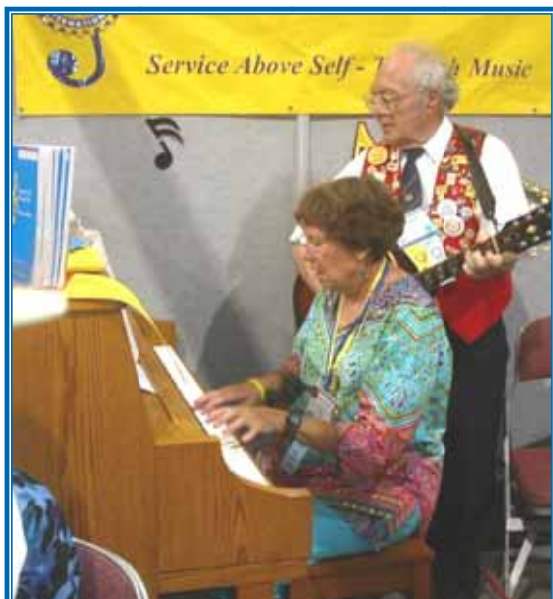
**Joyce Fritz & Ada Kahn**



**PDG Chungsam Doh, & Cesare Cianficconi**



**Paul Bordeleau, RI President Wilkerson, & Susan DuPree**



**Ellen Siegel & Lowell Yoder**



**King 'n' Trio performs**

## Formation of IFRM Foundation

The general membership approved the formation of a 501(c) 3 IFRM Foundation at its annual meeting during the RI Convention in Salt Lake City. With this approval, the fellowship moves forward with its plan to create a vehicle to accept tax-deductible donations that will be used to fund music literacy programs throughout the Rotary world.

In other actions, the general membership and IFRM Board of Directors approved the slate for the 2007-2008 IFRM Board of Directors:

<b>Susan DuPree</b>	Chair*
<b>Lee Denlinger</b>	Secretary*
<b>Curtis Reinhardt</b>	Treasurer*
<b>Darrell Gaukroger</b>	Vice-Chair, Australia
<b>Peter Moreton</b>	Vice-Chair, UK
<b>Lt. Col. Andy Anderson</b>	Director
<b>Ada Kahn</b>	Director
<b>Peter Sotheran</b>	Director
<b>François Daoust</b>	Director
<b>Chungsam Doh</b>	Director

\*Executive Committee

The Directors also approved the continuation of the current dues' structure: \$10US annually (July 1-June 30) for regular members and a one-time payment of \$200 for Lifetime membership.

## World Choir Opportunity

Calling all singers for the District 5240 Conference in Bakersfield, California, USA, from October 5 to October 7, 2007. Past IFRM Chair and IFRM Director, PDG **Chungsam Doh** will rehearse the choir Friday afternoon, direct the Saturday morning and evening sessions and end with the Sunday morning inspiration.. This is a rare opportunity prior to the World Choir concert at the 2008 RI Convention in Los Angeles. To participate, download the registration form and hotel information at [www.rotarydistrict5240.org](http://www.rotarydistrict5240.org). There is no registration fee and you are NOT required to buy the meal plan *unless* you plan to attend all meetings.

For information, contact **Chungsam Doh** at [csdoh@charter.net](mailto:csdoh@charter.net) or phone 805-772-8995.

## New Membership Director



**Susan DuPree pinning new member Femi Oladimeji**

The IFRM Board of Director is proud to announce that **Peter Sotheran**, Past President of the Rotary Club of Guisborough and Great Ayton (D-1030), has accepted our invitation to become Membership Chair.

**Peter Sotheran** joined IFRM in 2006 and was appointed a Director in July 2007. Peter was involved in the IFRM project to help re-establish the music department at a hurricane damaged school in Grenada, W.I. He was made a Member of the British Empire (MBE) in 2006 in recognition of his charity work in his home town. HM Queen Elizabeth personally presented the award at Buckingham Palace.

Contact Peter at [swtalmshouse@hotmail.co.uk](mailto:swtalmshouse@hotmail.co.uk) or via Skype 'Sotherans'.



**New member Kevin Yung & Peggy Malcolm**

## The European Connection

By PDG Peter Moreton, Vice-Chair (UK)

How do IFRM members in the U.K. (Zones 17-18) endure one of its wettest summers ever? The BBC Symphony Orchestra conductor recently stated that the most uplifting thing you can do is sing. Sing! It's the best therapy there is. For instance, **Margaret Hunt's** light opera group is singing its heart out for charity, before she performs in Truro Cathedral. **David Shearmur**, Chairman of the Stour Choral Society, reports a very successful evening celebrating their 30th anniversary with the Stour Festival Orchestra. **David Morehen** has a rip roaring ladies barbershop group in Devon. Yet, getting Rotarians to sing at meetings is a different story!

The season's sensation, however, has been **Richard Green's** Goldthorn Theatre Company's European preview of "Rotary the Musical" at Wolverhampton in April. To expose the show at District and National levels could do a wonderful job in marketing Rotary. Get your own DVD of the fabulous show at [richard.green51@talktalk.net](mailto:richard.green51@talktalk.net).

New member, **Louis Fisher** (D- 1130), was quite impressed with his first RI Convention, not the least of IFRM's involvement, as well. "Every Rotarian should go to a Convention", says Louis. "Only then will they share in and experience the true internationalism of Rotary".

Fellowships really raise the profile of Rotary. Since there is a strong feeling in the U.K. that more could be done to encourage and support them, a good deal of lobbying is currently taking place to raise a greater interest, gaining important input from all leaders and editors across our 29 Districts. Well- *there's something to sing about!*



Andy Anderson & the Utah Bagpipe Band

## When You Wish Upon a Star...

Realizing IFRM's mission statement "...to promote music through school and community projects," the Fellowship moved ahead this year to fund three projects. The first project to be completed was our inaugural grant to purchase needed instruments and music books for St. Andrew's RC School in Grenada. Secondly, in a joint venture with Mr. Holland's Opus Foundation, IFRM purchased six trumpets for band at the McDonogh 15 School for the Creative Arts in New Orleans, Louisiana, USA, effectively re-establishing McDonogh's music program.

*Update:* We have secured a grant number and are just waiting for RI in Evanston for their approval of our cooperative project with Rotary Club "Manila 101" in the Philippines and the Fremont, Union City, Newark (FUN) RC. IFRM contributed monies to fund age-appropriate music books, CDs, and DVDs for a mobile media center that will service low income pre-school children in two Greater Manila neighborhoods. *We are proud to announce that Josie Henson, member of the eClub One of Rotary (Colorado, USA) and spouse of PDG Ben Henson, residing in Pampanga province, Philippines has agreed to help in the selection of indigenous music materials for this project.*

We are currently exploring future projects specifically in Thailand and rural Hawaii. If you are interested in participating in projects destined for the Philippines, Thailand or rural Hawaii, please contact IFRM Projects Coordinator, Lee Denlinger at [Secretary@IFRM.org](mailto:Secretary@IFRM.org).

## Children Invited to Compete

Talented children, ages 8-12 years, are invited to compete in the sixth annual International Russian Rotary's Children Music Competition in Moscow in March 2008. In the past five years, 72 Rotary Clubs from 20 countries have participated in this music competition. Featured instruments are the violin, violoncello, piano, flute, oboe and clarinet. Preliminary selection is based on submitted videotapes or DVDs. Winners of the competition are available to tour. For more information, please e-mail [Moscow@thyssenkrupp.ru](mailto:Moscow@thyssenkrupp.ru)

## Keeping the Beat



**Ada Kahn, Ph.D. (RC of Evanston, Ill)**

Music was the universal language at the IFRM booth in Salt Lake City. Many Rotarians were “keeping the beat” as they sang under the able direction of “**Andy**” **Anderson** and **Chungsam Doh**. Still others played their favorite pieces on the piano, guitar, flute or bagpipe.

When offered typical Rotary selections, some revealed that their clubs don’t even sing! I’d like to change that. Since I’ve been an Evanston Rotary Club member (1994), we have routinely opened meetings with singing “American the Beautiful.” As Music Chair this year, I am boosting enthusiastic singing, whether by varying our opening song or featuring good singers at the mike. I started the trend with “America” (also known as “My country, ‘tis of thee”) led by talented tenor, **Garth Conley**, whom I accompanied on piano. Garth’s rich sounding voice won him resounding applause.

To expand on the traditional offerings found in the official Rotary song book, we will hand out words for “Sing Out A Song of Rotary” (Tune: “Give my Regards to Broadway”) and “Vive Le Rotary”, (Tune: “Vive la Compagne”; Lyrics by “**Andy**” **Anderson**.) Because I was so moved when nearly 17,000 Rotarians in Salt Lake City sang “Let There Be Peace,” that’s on our list, too. Of course, we will learn “Rotary Shares,” by IFRM composer, **Paul Bordeleau** for **RI President Wilkerson**.

Encourage singing! Ask members with strong voices to lead the songs. Singing together keeps the “Rotary beat” going every week in every club.

Contact Ada P. Kahn, Ph.D., author of *Keeping The Beat: Healthy Aging Through Amateur Chamber Music Playing* [www.keepingthebeat.com](http://www.keepingthebeat.com) or [www.adapkahn.com](http://www.adapkahn.com)

## Footnotes

**Peter Sotheran**, IFRM’s new Membership Chair, devotes much of his free time to organizing classical music concerts at the 17th century almshouses in northern England, where he serves as a Trustee. Built in 1676, the almshouses provide twenty-five sheltered homes for people in their retirement years.

"Classics at Kirkleatham have proved to be a wonderful way of sharing our beautiful 17th century building with visitors and a useful way of supplementing our income, to help maintain the building," said Peter. Although many of the residents receive state benefits, the almshouses receive no government or state money towards the upkeep of the building.



**Sarah Sweeting, Suzannah Clarke, & Jeanette Wainwright, with Peter Sotheran**

"That's why the concerts are so important to us," added Peter." They generate income for routine maintenance of the Chapel and for the Residents' Amenities Fund."

Over seventy musicians from every continent in the world (except Antarctica) have performed at the tiny Chapel in this small North Yorkshire village. Most have been finalists or winners of major international music festivals; many have played at the Carnegie Center's Weill Hall or London's Wigmore Hall.

"They love the near perfect acoustics and the intimate atmosphere of our 100 seat Chapel," said Peter. Mezzo-soprano Sarah Sweeting, a regular at Sydney and Melbourne Opera Houses in Australia once performed solely for the pleasure of singing there, while on a trip to visit her family in the UK.

With the 2009 RI Convention having moved from Seoul to Birmingham in the UK, there may well be an opportunity to arrange an IFRM Classical Concert to coincide with the Convention dates. To find out more, go to [www.communigate.co.uk/ne/swthospital](http://www.communigate.co.uk/ne/swthospital).

## Look Who's New!

*Welcome to IFRM: 81 new members since March 1, 2007*

FirstName:	LastName:	District:	Club:	Talents:
Randy	Allen	5420	Cedar City	tenor, pianist, composer
Cecilia	Babkirk	5170	San Jose West	piano
Rita	Ballou	7950	Osterville	clarinet, concert orchestra, town band
Mike	Beecher	1240	Basildon Concord	electric keyboards, choirs
Bonnie	Best	5170	San Leandro	vocalist, loves music
Dorien	Boss	7080	Brampton	performer, director, writer, soprano
Michael	Braz	6920	Downtown Statesboro	composer, arranger, music ed
Jimmie	Brewer	5170	Scotts Valley	song leader, tenor, guitar
Randy	Brooks	5500	Marana	guitar
Cathy	Cardas	5170	Livermore Valley	alto
Enrico	Carozzie	2040	Milano S. Carlo Naviglio Grande	La Scala music lover
Vera	Cassinelli	7910	Milford	valve, slide, key oil for all instruments
Cesare	Cianficconi	2030	Torino Sud-Ovest	tenor
Gary	Citti	5170	Santa Clara	music lover
Jerre Jean	Conran	6290	Coopersville	soprano, piano teacher
François	Daoust	5170	Pleasanton North	music lover, IFRM webmaster
Eduardo	Deang	3810	Tondo, Manila	vocalist
Evelyn	Deang	5170	F.U.N. Sunset	dancer
Primrose	Drake	1140	Ewell	soprano
Louis	Fisher	1130	Edmonton	Rotary events promoter
Rod	Fivelstad	5160	Grass Valley	bass singer, folk guitar
Greg	Freitas	5130	Petaluma Sunrise	fiddle and guitar
Linda	Friedman	7350	State College Downtown	soprano and alto
Ken	Grover	5400	Boise Southwest	guitar, choral ensemble (quartet)
Brian	Haig	5170	F.U.N. Sunset	enjoys good music
Stephen	Hart	5320	Villa Park	bass
William	Horie	5500	Marana	tenor, Rotary song leader
Kenji	Igeta	2570	Kumagaya East	tenor, chorus member
David	Johnson	5910	Bryan	bass and choir director
Don	Jones	5760	San Ramon	baritone
Robert	Keefer	5650	Clarinda	tenor, soloist, chorus
Raymond	Khong	9800		
Mark	Krittenbrink	5559	Norman	tenor, Rotary song leader
Ronald	Lawrence	6780	Farragut	tenor, bass
Victoria	Lehman	5550	Winnipeg Downtown	alto,
Raquel	Limon	4180	Valle de Cuernavaca	Proyecto Banda de Musica
Lindo	Locksley	7020	New Kingston	chorister
Linda	Lomax	5470	Edwards/Vail Down Valley	soprano, percussion
Lloyd	Lowrey	5170	Gilroy	baritone, guitar
Kathleen	Madden	5010	Anchorage East	piano, piano technician

Donald	Malcolm	5110	Philomath	baritone
Steve	McCray	5170	San Jose North	music lover
Dorothy	McCree	5790	Arlington North	soprano
Richard	McCree	5790	Arlington North	bass
Igbinovia	Mercy	9140	Benin Metropolitan	alto
Don	Mohr	7610	Fredericksburg	bass, hand bells
Jackie	Morgan	5520	Franklin Mountains	alto
Carole	Neff	6840	New Orleans	alto, piano
Dick	Neff	6840	Metaine	bass
John	Nelson	5030	Mercer Island	bass
Douglas	Nisbet	1010	Aberdeen Deeside	bass
Emilia	Nwokoro	9130	Karu	loves to sing
Femi	Oladimeji	9130	Osogbo	violin, bass
Jeff	Orth	5170	Gilroy	guitar, baritone
David	Parry	5400	Pocatello	bass in large choir
Sam	Pesner	5170	Los Altos	guitar
Julie	Phares	5440	Estes Park Noon	second soprano
August	Reader	5150	San Francisco #2	tenor (opera)
Suzanne	Sandoval	5170	F.U.N. Sunset	singer
Ron	Savoline	7080	Burlington	tenor, folk music
Felicia	Schweizer	2040	Milano Settimo	La Scala music lover
Barbara and Don	Shinn	5730	Greater Odessa	soprano, voice teacher, choir director; tenor
Patricia	Sibley	5020	Parksville AM	autoharp, alto
John	Smith	6540	Anthony Wayne--Fort Wayne	percussion, composer, arranger, bass
Randy	Smith	6040	Kirksville	bass; sax and woodwinds
Nancy	Stevens	5440	Estes Park Noon	music mgmt.; classical
David	Thompson	5330	Temecula	guitar, song leader, bass
John	Tregurtha		Glen Innis	promoter, newswriter
Chuck	Uchtman	6440	Evanston	loves music
Jerry	Ugwu	9140	Enugu City Layout	conga drums
Patrick	Wallace	1240	Stanford-Le-Hope & Corringham	flute, Hammond organ, bass (retired)
Denny	Weisgerber	5170	Milpitas	baritone, music lover
Bob and Karla	Weldon	6490	Bloomington/Normal Sunset	tenor, piano; alto, civic chorale
Russ	Williams	5470	1167	guitar, vocalist, King 'n Trio
Bruce	Williams	6930	Delray Beach	church organist, pianist
Jacque	Williams-Cartright	5170	Livermore	music lover
Helen	Wilson	5790	Stephenville	piano
Patty	Wolfe	5150	San Rafael	soprano, actor, dance
Sharon	Xavier de Sousa	5170	Niles/Fremont	choir director, soprano, cantor; is a Rotary Ann and Inner Wheel member of husband John's club
Kevin	Yung	7030	Maraval ROTARACT	countertenor
Lena	Zee	5170	Fremont	soprano, piano, folk songs



## Membership Application/Renewal Form

Mr.  Mrs.  Miss  Ms.

*Please Check One*

First Name: \_\_\_\_\_ Last Name: \_\_\_\_\_  New Member  Renewal

Rotary Club Name \_\_\_\_\_ District No. \_\_\_\_\_ Country \_\_\_\_\_

Mailing Address \_\_\_\_\_

Home Phone \_\_\_\_\_ Cell \_\_\_\_\_

Work Phone \_\_\_\_\_ Email (PRINT!) \_\_\_\_\_

I am a  Rotary Song Leader  Piano Player  My Voice is (circle one) S A T B

Musical Talent/Occupation:

I am enclosing my dues of

US \$10 for **Current Year** 2006-07  US \$200 for **Lifetime Membership**

Plus additional Years \_\_\_\_\_

Plus donation \_\_\_\_\_ for IFRM projects

Plus # \_\_\_\_\_ of Small 1/2" x 1" G Clef Pin(s) at \$5. Each & \$2. Shipping

Plus # \_\_\_\_\_ of Large 1" x 2" G Clef Pin(s) at \$5. Each & \$2. Shipping

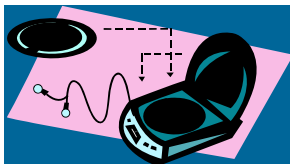
TOTAL AMOUNT ENCLOSED: US \$ \_\_\_\_\_

Date: \_\_\_\_\_

Signature: \_\_\_\_\_

Make checks payable to **IFRM**, and mail to: **Peter Sotheran, Membership Chair**  
**P.O. Box 10955**  
**Pleasanton, CA 94588 USA**

### "I Play/You Sing" CD's



Members **Annie and Doug Cleveland** have produced a selection of professional piano accompaniments for popular songs from the Rotary Songbook on 5 CDs and all proceeds are donated back to IFRM! For a catalogue and a *free* sample CD sent postpaid, contact:

**IPlay/You Sing**, 312 Mountainview Drive, Nampa, Idaho 83686 USA.

Phone: (208) 466-3129 E-mail: [acdccleveland@msn.com](mailto:acdccleveland@msn.com)

### Songs for the Rotary Club

You can order your own songbook of 80 traditional Rotary and non-Rotary songs in English. Use code 033EN and send a cheque for US\$3.00 to: **RI Publications Order Services Section**, 930 Pitner Avenue, Evanston, Illinois 60202, U.S.A Ph: (847) 866-4600, fax: (847) 866-3276 or contact [www.rotary.org](http://www.rotary.org)



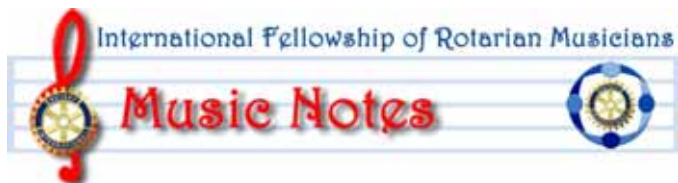
### **IMPORTANT NOTICE TO MEMBERS**



As of February 2008, MusicNotes may be found exclusively online at [www.IFRM.org](http://www.IFRM.org)  
 This issue vol 34 #2 is the last edition to be printed and mailed to the membership. If for any reason you cannot access the online newsletter, please request a printed version from the Secretary ([secretary@IFRM.org](mailto:secretary@IFRM.org))

## IFRM Directory (2007-2008 Officers)

- Dr. Susan DuPree**, *Chair*, 3267 Monaghan St., Dublin, CA 94568 USA  
 Tel: (925) 998-9007 Fax: (925) 829-8414 e-mail: chair@IFRM.org
- Lee Denlinger**, *Secretary*, 4646 Lakewood Street, Pleasanton, CA 94588 USA  
 Tel: (925) 846-7029 Fax: (925) 484-2934 e-mail: secretary@IFRM.org
- Curtis Reinhardt**, *Treasurer*, 2251 Shell Beach Road, #6 Pismo Beach, CA 93449 USA  
 Tel: (805) 773-4173 Fax: n/a e-mail: treasurer@IFRM.org
- Darrell Gaukroger**, *Vice-Chair/Australia*, 41 Sharp Street, Box 675, Cooma, NSW, 2630 Australia  
 Tel: (805) 772-7935 Fax: 011-02-6452-1683 e-mail: dgcooma@bigpond.net.au
- PDG Peter Moreton**, *Vice-Chair/United Kingdom*,  
 86 Church Way, Weston Favell, Northampton NN3 3BY, England  
 Tel: & Fax (from the USA): 011-44-1604-406-371 e-mail: docswing@btopenworld.com
- Peter Sotheran**, *Membership Chair*  
 Home Farm, Yearby, Redcar TS11 8HQ, England  
 Tel: (from the USA): 011-44-1642-471-662 e-mail: peter.sotheran@tiscali.co.uk
- Lt. Col. Harold "Andy" Anderson**, *Director*, 3004 Lagar Lane, Wilmington, NC 28405 USA  
 Tel: (910) 798-8700 Fax: (910) 762-6504 e-mail: HJSAndy2@att.net
- Ada P. Kahn**, *Director*, 2562 Wellington Court, Evanston, IL 60201-4975 USA  
 Tel: (847) 328-4512 Fax: n/a e-mail: AdaPKahn@aol.com
- François Daoust**, *Director*, 7734 Creekside Drive, Pleasanton, CA 94588 USA  
 Tel: (925) 425-9513 Fax: n/a e-mail: fdaoust@vervial.com
- Chungsam Doh**, *Director*, 9 Zanzibar Terrace, Morro Bay, CA 93442-3209 USA  
 Tel: (805) 772-8995 Fax: (805) 772-7935 e-mail: csdoh@charter.net



**Lee Denlinger, Secretary**  
**P.O. Box 10955**  
**Pleasanton, CA 94588 USA**

*Address Service Requested*